



J&M CONSULTANTS, INC.

**DATA CENTER EXPERTS
TELECOM & IT CONSULTANTS**

+1 925-890-2801

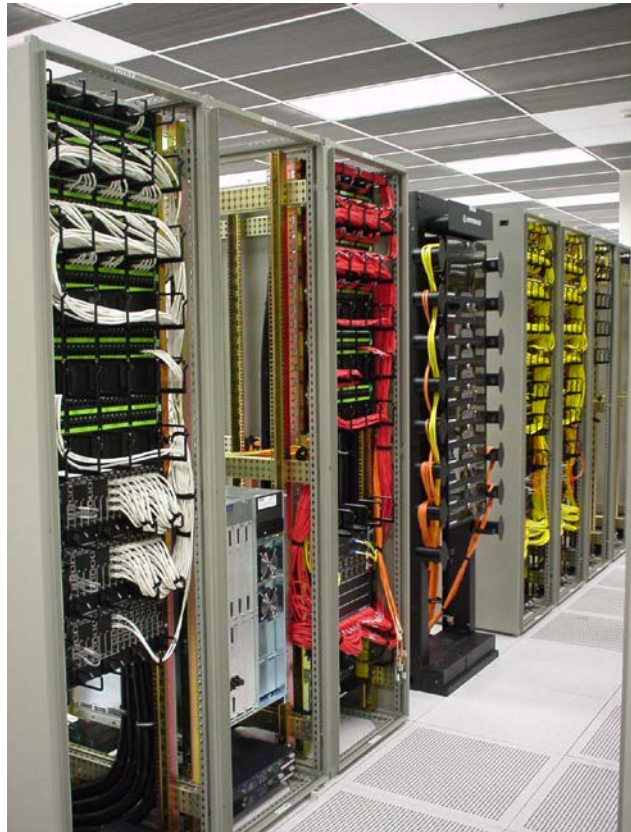
jew@j-and-m.com

J&M CONSULTANTS – INDEPENDENT TELECOMMUNICATIONS & IT CONSULTING FIRM WITH INTERNATIONALLY RECOGNIZED EXPERTISE AND 20+ YEARS OF PRACTICAL EXPERIENCE

FIRM DESCRIPTION

J&M Consultants is internationally recognized experts that hold numerous leadership positions in committees that develop U.S. national (ANSI) and international (ISO/IEC) telecommunications standards.

We have 30 years of practical experience with a wide range of clients and projects worldwide, including data centers, office buildings, campuses, training centers, labs, and server rooms, trading floors.



SERVICES

Our services include:

- Telecommunications and network infrastructure for data centers, labs, campuses, and office buildings
- Data center, lab, and office building relocations.
- Enterprise telecommunications and data center standards
- Assessment of existing telecommunications, networks, and data centers
- Design peer review

We have BICSI RCDD's and are a certified DBE/SBE/MBE

WHY USE J&M CONSULTANTS – Unmatched expertise & experience

INTERNATIONALLY ACKNOWLEDGED TELECOM & DATA CENTER EXPERTS

Leadership position in committees developing U.S. national and international standards

- Chair TIA TR-42.6 Telecommunications Infrastructure and Equipment Administration subcommittee and primary contributor to the TIA-606-A-1, TIA-606-B standards, and TIA-606-C standards.
- Vice-Chair to US delegation to ISO/IEC JTC 1 SC 25 WG 3 Interconnection of information technology equipment – customer premises cabling
- Vice-Chair TIA TR-42.3 Telecommunications Pathways & Spaces
- Co-Chair of TIA TR-42.1.1 data center working group that developed ANSI/TIA-942 Telecommunications Infrastructure Standard for Data Centers and primary contributor to this standard, all revisions, and addenda.
- Secretary of TIA TR-42 – the parent committee of the TR-42 subcommittees that develop TIA premises telecommunications cabling standards
- Co-chair of the BICSI subcommittee that developed ANSI/BICSI 002 Data Center Design and Implementation Best Practices Standard.
- U.S. National Committee project manager for the ISO/IEC 24764 international data center telecommunications cabling standard.
- U.S. National Committee project manager for the ISO/IEC 14763-2 international cabling installation and planning standard.
- Editor and primary contributor to ISO/IEC 14763-2-1 telecommunications administration identifier standard.
- Contributor to a European Union data center standards being developed CENELEC (European Committee for Electrotechnical Standardization).
- Contributed to corporate data center standards and guides for several companies including Avaya, Cisco, Dell, Exodus, GlobalCenter, Sprint, and Wells Fargo Bank.
- Regular contributor of magazine articles to trade publications and speaker at conferences.

UNMATCHED DATA CENTER PLANNING & RELOCATION EXPERIENCE

100+ data center projects

The principals of the company have been major contributors in the project management, design, and relocation of over 100 data centers with a total raised floor space of over 2 million square feet. Each of our principals has at least 20 years experience with data center design and relocation.

- ADP Brokerage Services – data center relocation, Journal Sq, NJ
- Advanced Fibre Communications – HQ data center design, Petaluma, CA
- AmSouth Bank – data center relocation, Birmingham, AL

- AMD – data center relocation, Sunnyvale, CA
- Blue Cross & Blue Shield of FL – data center design, Jacksonville, FL
- Chevron – Credit card data center relocation, Concord, CA
- Chevron – HQ data center relocation, San Ramon, CA
- Chevron-Gulf merger – 5 data center relocations – Pittsburgh, Atlanta, London, and 2 in Houston
- City of San Francisco – 2 data center relocations, SF, CA
- City of San Francisco Interim 911 data center expansion, SF, CA
- Computer manufacturer – data center strategy and expansion projects – Texas
- Comcast – multiple data center design and upgrade projects throughout the US
- County of Sacramento – data center relocation, Sacramento, CA
- County of Santa Clara – data center relocation, San Jose, CA
- Crowley Maritime – data center relocation, Jacksonville, FL
- Drexel Burnham Lambert – 7 World Trade Center data center move, NY
- Drexel Burnham Lambert – Lincoln Harbor, NJ data center move
- Fidelity Investments – 2 data center moves to Marlborough, MA
- Franklin-Templeton – data center relocation, Rancho Cordova, CA
- Franklin-Templeton – data center redesign, San Mateo, CA
- GlobalCenter – 22 data centers in London (2), Dublin, Paris, Amsterdam, Munich, Frankfurt, Tokyo, Hong Kong, Sydney, Mexico City, Sunnyvale (3), Anaheim, Herndon (2), Boston, Miami, Chicago, and New York (2)
- Intel – HQ Engineering data center relocation, Santa Clara, CA
- Levi Strauss & Co – data center relocation, Westlake, TX
- Market data services company – data center design review – NJ
- Mervyn's – data center relocation, Plano, TX
- NationsBank – Dallas and North Carolina disaster recovery data centers
- Paine Webber – data center relocation, Lincoln Harbor, NJ
- SBC Warburg – data center relocation, Stamford, CT
- State of Washington OB2 Data Center Expansion, Olympia, WA
- Swiss Bank Corp – 222 Broadway data center relocation, NY, NY
- Swiss Bank Corp – Swiss Bank Tower data center relocation, NY, NY

- Swiss Bank Corporation – 222 Broadway 3rd fl trading floor data center expansion, NY, NY
- Taiwan Stock Exchange data center – Taipei, Taiwan – peer review
- Target Corporation – 3 data center relocations in Minneapolis, MA
- University of Texas – Austin – computer room cabling system design
- Visa – data center & lab design and relocations, Beijing, Shanghai, Cairo, San Mateo, CA, Denver, CO, McLean, VA, and Singapore
- Web search company – data center cabling and pathways design review and standards - Global

26 engineering labs, 5 training centers, 60 office cabling projects, 5 campus cabling projects, 2 corporate mergers, 4 trading floors, 4 disaster recovery projects over 20 yrs

Each of our principals also have at least 22 years experience with major infrastructure projects.

Engineering lab design and support for 26 engineering labs (computer rooms specially designed for product testing)

- Lucent – CPE Test Lab – largest remote access test lab in the world
- Lucent - UL product compliance test lab
- Texas Instruments – DSL Test Lab
- Ascend – ACP Lab
- Ascend – Alameda1601 Engineering Lab
- Ascend – Bohemia New York Lab
- Ascend - Clearwater SS7 Lab
- Ascend - Core Switching Lab
- Ascend - Denver Demo Lab
- Ascend - DSL Lab
- Ascend - GRF Router Lab
- Ascend - Hardware Development Lab
- Ascend - Major Accounts Lab
- Ascend - Mega POP Lab
- Ascend - NSC Lab
- Ascend – Pipeline Escalation Lab
- Ascend - Sales Demo Lab
- Ascend - Software Development Lab
- Ascend - TNT Router Lab

- Ascend - Video Lab
- Ascend - Window Lab
- Ascend - San Jose Customer Support Lab
- Ascend - San Jose Engineering Lab
- Ascend - Salt Lake City Demo Lab
- Ascend - Scottsdale SS7 Lab
- Ascend – Westlake Texas Lab

Engineering lab design and support for 5 training centers

- Ascend - Alameda Training Center
- Ascend - San Jose Training Center
- Ascend - WebChat Training Room
- State of Washington – Lacey Training Center
- Swiss Bank Corporation – 222 Broadway Training Centers

Building cabling system designs for 60 buildings

- AMD – Sunnyvale, CA
- Ascend – Bohemia, NY; Westlake, TX; Alameda, CA; San Jose, CA; Clearwater, FL; Scottsdale, AZ; Salt Lake City, UT; and Denver, CO.
- Cerent/Cisco – Petaluma, CA office
- City and County of San Francisco – Stevenson Street, One Market, and Hall of Justice
- County of Santa Clara – 2nd floor offices 1555 Berger, San Jose
- County of Sacramento – 8th & G St (10 fl high rise), Coroner Crime Lab
- GlobalCenter – Geneva office building, Sunnyvale, CA
- GlobalCenter – office areas in 17 of the 22 data centers worldwide
- Levi Strauss & Co – Westlake, TX
- Lucent – Phase 2 Alameda Campus Expansion (2 office buildings)
- Mervyn’s data center support offices – Plano, TX
- NetCentives – San Francisco, CA office
- NorWest Venture Partners – Palo Alto, CA office
- Oakland Police Department – Oakland, CA
- RoseChurch Holdings Pty Ltd. – Sydney, Australia – Studio City, Chatswood Connection, George Street - Parramatta, Gordon Rugby Club, 799 Pacific Highway

- SBC Warburg Stamford – 15 fl high rise and 7 fl trading floor/data center, Stamford, CT
- State of California – State Library and Courts Annex, Sacramento, CA
- State of Washington – Olympia, WA - Office Building 2, Lacey Training Center, Washington GA Building, Adams Building
- Swiss Bank Corp– 222 Broadway (26 fl high rise) & Swiss Bank Tower (35 fl high rise) in Manhattan
- Target – data center support offices – Brooklyn Park, MN
- Visa OCX campus office buildings – VA
- Zhone – Alameda, CA office
- Five campus cabling projects:
 - Ascend Communications/Lucent campus expansion
 - Sacramento County Airport expansion
 - Sacramento downtown campus cabling expansion to 8th & G Street
 - Target North Campus data centers
 - Visa OCX campus cabling system
- Two major corporate mergers
 - Ascend-Stratus Merger – project manager for network consolidation
 - Chevron-Gulf merger – largest corporate merger at the time
- Four trading floors
 - SBC Warburg Stamford new trading floor
 - Swiss Bank Corporation 222 Broadway 4th floor trading floor redesign
 - Swiss Bank Corporation 222 Broadway 5th floor trading floor redesign
 - Swiss Bank Corporation 222 Broadway new 6th floor trading floor.
- Four disaster recovery projects
 - Aetna
 - Ascend/Lucent
 - Franklin Templeton
 - NationsBank