



**J&M CONSULTANTS, INC.**

**DATA CENTER EXPERTS  
TELECOM & IT CONSULTANTS**

+1 925-890-2801

[jew@j-and-m.com](mailto:jew@j-and-m.com)

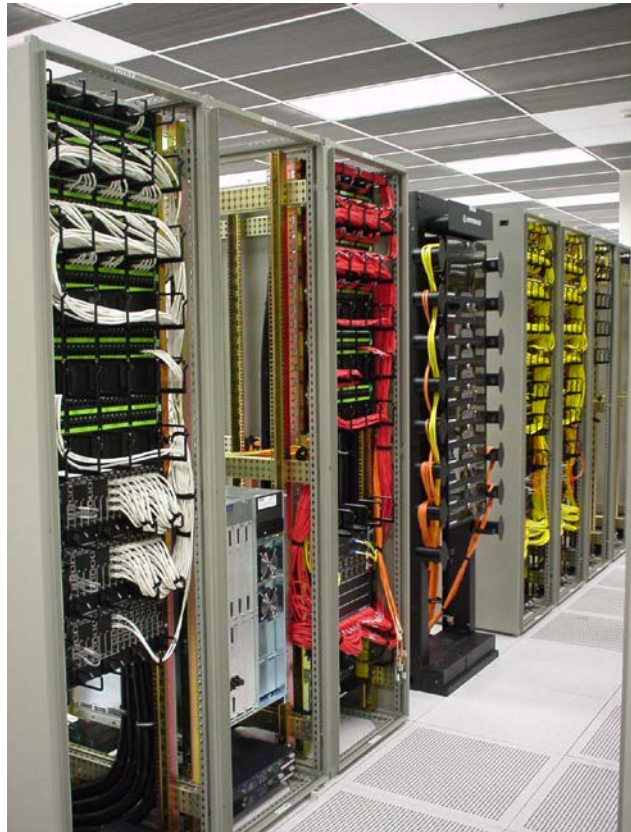
---

**J&M CONSULTANTS – INDEPENDENT TELECOMMUNICATIONS &  
IT CONSULTING FIRM WITH INTERNATIONALLY RECOGNIZED  
EXPERTISE AND 30+ YEARS OF PRACTICAL EXPERIENCE**

### **FIRM DESCRIPTION**

J&M Consultants is internationally recognized experts that hold numerous leadership positions in committees that develop U.S. national (ANSI) and international (ISO/IEC) telecommunications standards.

We have 30+ years of practical experience with a wide range of clients and projects worldwide, including data centers, office buildings, campuses, training centers, labs, and server rooms, trading floors.



### **SERVICES**

Our services include:

- Telecommunications and network infrastructure for data centers, labs, campuses, and office buildings
- Data center, lab, and office building relocations.
- Enterprise telecommunications and data center standards
- Assessment of existing telecommunications, networks, and data centers
- Design peer review

We have BICSI RCDD's and are a certified DBE/SBE/MBE

**WHY USE J&M CONSULTANTS – Unmatched expertise & experience**

## **INTERNATIONALLY ACKNOWLEDGED TELECOM & DATA CENTER EXPERTS**

### **Leadership position in committees developing U.S. national and international standards**

- Vice-Chair to US delegation to ISO/IEC JTC 1 SC 25 WG 3 Interconnection of information technology equipment – customer premises cabling
- Vice-Chair TIA TR-42.3 Telecommunications Pathways & Spaces
- Co-Chair of TIA TR-42.1.1 data center working group that developed ANSI/TIA-942 Telecommunications Infrastructure Standard for Data Centers and primary contributor to this standard, all revisions, and addenda.
- Secretary of TIA TR-42 – the parent committee of the TR-42 subcommittees that develop TIA premises telecommunications cabling standards
- Co-chair of the BICSI subcommittee that developed ANSI/BICSI 002 Data Center Design and Implementation Best Practices Standard.
- Former-Chair TIA TR-42.6 Telecommunications Infrastructure and Equipment Administration subcommittee and primary contributor to the TIA-606-A-1, TIA-606-B standards, and TIA-606-C standards.
- U.S. National Committee project manager for the ISO/IEC 24764 international data center telecommunications cabling standard.
- U.S. National Committee project manager for the ISO/IEC 14763-2 international cabling installation and planning standard.
- Editor and primary contributor to ISO/IEC 14763-2-1 telecommunications administration identifier standard.
- Contributor to a European Union data center standards being developed CENELEC (European Committee for Electrotechnical Standardization).
- Contributed to corporate data center standards and guides for several companies including Avaya, Cisco, Dell, Exodus, GlobalCenter, Sprint, and Wells Fargo Bank.
- Regular contributor of magazine articles to trade publications and speaker at conferences.

## **UNMATCHED DATA CENTER PLANNING & RELOCATION EXPERIENCE**

### **100+ data center projects**

The principals of the company have been major contributors in the project management, design, and relocation of over 100 data centers with a total raised floor space of over 2 million square feet. Each of our principals has at least 20 years experience with data center design and relocation.

- ADP Brokerage Services – data center relocation, Journal Sq, NJ
- Advanced Fibre Communications – HQ data center design, Petaluma, CA
- AmSouth Bank – data center relocation, Birmingham, AL

- AMD – data center relocation, Sunnyvale, CA
- Blue Cross & Blue Shield of FL – data center design, Jacksonville, FL
- Chevron – Credit card data center relocation, Concord, CA
- Chevron – HQ data center relocation, San Ramon, CA
- Chevron-Gulf merger – 5 data center relocations – Pittsburgh, Atlanta, London, and 2 in Houston
- City of San Francisco – 2 data center relocations, SF, CA
- City of San Francisco Interim 911 data center expansion, SF, CA
- Computer manufacturer – data center strategy and expansion projects – Texas
- Comcast – multiple data center design and upgrade projects throughout the US
- County of Sacramento – data center relocation, Sacramento, CA
- County of Santa Clara – data center relocation, San Jose, CA
- Crowley Maritime – data center relocation, Jacksonville, FL
- Drexel Burnham Lambert – 7 World Trade Center data center move, NY
- Drexel Burnham Lambert – Lincoln Harbor, NJ data center move
- Fidelity Investments – 2 data center moves to Marlborough, MA
- Franklin-Templeton – data center relocation, Rancho Cordova, CA
- Franklin-Templeton – data center redesign, San Mateo, CA
- GlobalCenter – 22 data centers in London (2), Dublin, Paris, Amsterdam, Munich, Frankfurt, Tokyo, Hong Kong, Sydney, Mexico City, Sunnyvale (3), Anaheim, Herndon (2), Boston, Miami, Chicago, and New York (2)
- Intel – HQ Engineering data center relocation, Santa Clara, CA
- Levi Strauss & Co – data center relocation, Westlake, TX
- Market data services company – data center design review – NJ
- Mervyn's – data center relocation, Plano, TX
- NationsBank – Dallas and North Carolina disaster recovery data centers
- Paine Webber – data center relocation, Lincoln Harbor, NJ
- SBC Warburg – data center relocation, Stamford, CT
- State of Washington OB2 Data Center Expansion, Olympia, WA
- Swiss Bank Corp – 222 Broadway data center relocation, NY, NY
- Swiss Bank Corp – Swiss Bank Tower data center relocation, NY, NY

- Swiss Bank Corporation – 222 Broadway 3<sup>rd</sup> fl trading floor data center expansion, NY, NY
- Taiwan Stock Exchange data center – Taipei, Taiwan – peer review
- Target Corporation – 3 data center relocations in Minneapolis, MA
- University of Texas – Austin – computer room cabling system design
- Visa – data center & lab design and relocations, Mumbai, Bangalore, Beijing, Shanghai, Cairo, Jakarta, San Mateo, CA, Denver, CO, McLean, VA, and Singapore
- Web search company – data center cabling and pathways design review and standards - Global

**26 engineering labs, 5 training centers, 60 office cabling projects, 5 campus cabling projects, 2 corporate mergers, 4 trading floors, 4 disaster recovery projects over 30 yrs**

Each of our principals also have at least 20 years experience with major infrastructure projects.

**Engineering lab design and support for 26 engineering labs (computer rooms specially designed for product testing)**

- Lucent – CPE Test Lab – largest remote access test lab in the world
- Lucent - UL product compliance test lab
- Texas Instruments – DSL Test Lab
- Ascend – ACP Lab
- Ascend – Alameda1601 Engineering Lab
- Ascend – Bohemia New York Lab
- Ascend - Clearwater SS7 Lab
- Ascend - Core Switching Lab
- Ascend - Denver Demo Lab
- Ascend - DSL Lab
- Ascend - GRF Router Lab
- Ascend - Hardware Development Lab
- Ascend - Major Accounts Lab
- Ascend - Mega POP Lab
- Ascend - NSC Lab
- Ascend – Pipeline Escalation Lab
- Ascend - Sales Demo Lab
- Ascend - Software Development Lab

- Ascend - TNT Router Lab
- Ascend - Video Lab
- Ascend - Window Lab
- Ascend - San Jose Customer Support Lab
- Ascend - San Jose Engineering Lab
- Ascend - Salt Lake City Demo Lab
- Ascend - Scottsdale SS7 Lab
- Ascend – Westlake Texas Lab

Engineering lab design and support for 5 training centers

- Ascend - Alameda Training Center
- Ascend - San Jose Training Center
- Ascend - WebChat Training Room
- State of Washington – Lacey Training Center
- Swiss Bank Corporation – 222 Broadway Training Centers

Building cabling system designs for 60 buildings

- AMD – Sunnyvale, CA
- Ascend – Bohemia, NY; Westlake, TX; Alameda, CA; San Jose, CA; Clearwater, FL; Scottsdale, AZ; Salt Lake City, UT; and Denver, CO.
- Cerent/Cisco – Petaluma, CA office
- City and County of San Francisco – Stevenson Street, One Market, and Hall of Justice
- County of Santa Clara – 2<sup>nd</sup> floor offices 1555 Berger, San Jose
- County of Sacramento – 8<sup>th</sup> & G St (10 fl high rise), Coroner Crime Lab
- GlobalCenter – Geneva office building, Sunnyvale, CA
- GlobalCenter – office areas in 17 of the 22 data centers worldwide
- Levi Strauss & Co – Westlake, TX
- Lucent – Phase 2 Alameda Campus Expansion (2 office buildings)
- Mervyn’s data center support offices – Plano, TX
- NetCentives – San Francisco, CA office
- NorWest Venture Partners – Palo Alto, CA office
- Oakland Police Department – Oakland, CA

- RoseChurch Holdings Pty Ltd. – Sydney, Australia – Studio City, Chatswood Connection, George Street - Parramatta, Gordon Rugby Club, 799 Pacific Highway
- SBC Warburg Stamford – 15 fl high rise and 7 fl trading floor/data center, Stamford, CT
- State of California – State Library and Courts Annex, Sacramento, CA
- State of Washington – Olympia, WA - Office Building 2, Lacey Training Center, Washington GA Building, Adams Building
- Swiss Bank Corp– 222 Broadway (26 fl high rise) & Swiss Bank Tower (35 fl high rise) in Manhattan
- Target – data center support offices – Brooklyn Park, MN
- Visa OCX campus office buildings – VA
- Zhone – Alameda, CA office
- Five campus cabling projects:
  - Ascend Communications/Lucent campus expansion
  - Sacramento County Airport expansion
  - Sacramento downtown campus cabling expansion to 8<sup>th</sup> & G Street
  - Target North Campus data centers
  - Visa OCX campus cabling system
- Two major corporate mergers
  - Ascend-Stratus Merger – project manager for network consolidation
  - Chevron-Gulf merger – largest corporate merger at the time
- Four trading floors
  - SBC Warburg Stamford new trading floor
  - Swiss Bank Corporation 222 Broadway 4<sup>th</sup> floor trading floor redesign
  - Swiss Bank Corporation 222 Broadway 5<sup>th</sup> floor trading floor redesign
  - Swiss Bank Corporation 222 Broadway new 6<sup>th</sup> floor trading floor.
- Four disaster recovery projects
  - Aetna
  - Ascend/Lucent
  - Franklin Templeton
  - NationsBank